



## EyeOn Supply Chain Network Fast Scan

A systematic approach for actionable supply chain network insights in no time

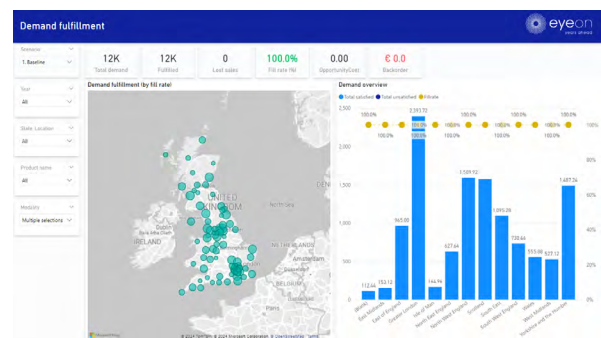
In a rapidly changing business environment, optimizing your supply chain network and ensuring it is future-proof is a real challenge. Questions may arise such as: Should we expand our distribution asset footprint? Should we diversify suppliers or change logistics providers? How to best allocate supply to demand within our current asset footprint? Should we expand our own warehouse capacity or should we rather outsource to a 3PL? How to prepare for future growth or harvest synergies after a merger or an acquisition? Many companies struggle with these kind of questions and decisions are often based on 'gut feeling'.

EyeOn is a trusted inventory optimization partner for renowned multinationals, but EyeOn Stock has proved its value also for small and medium-size companies. Safety stock reductions vary between 10-20%, at the same time the number of stockouts can be reduced by 30-40%.

### Quick wins and insights into potential improvement areas

Conducting a full Supply Chain Network Design (SCNWD) assessment has significant savings potential, however it can be very effort-, time- and data-intensive.

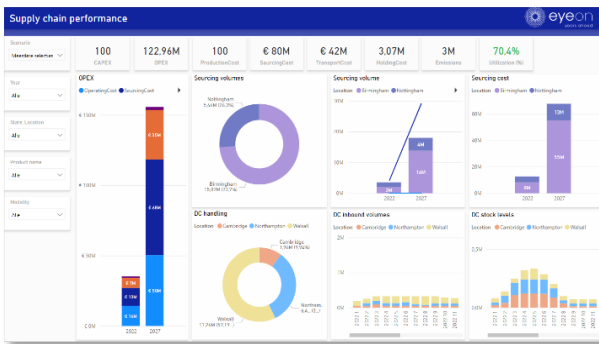
It is furthermore not straightforward to pinpoint where the potential is and how to seize the opportunity. We at EyeOn therefore developed the Supply Chain Network Fast Scan. In this quick and low-effort assessment, we evaluate and optimize the flows in your current network and provide actionable directions of potential improvement areas in no time. This entry-level assessment can help you determine the potential and cost-effectiveness of a future, bigger, investment.



### The objectives of the Fast Scan

- Harvest 'low-hanging fruit' by optimizing flows with limited changes to the asset footprint
- Get quick insights into the main bottlenecks and improvement areas of your supply chain network
- Quick proof-of-value: roughly quantify your supply chain network improvement potential versus current performance Portfolio segmentation

# EyeOn Supply Chain Network Fast Scan



## Basic versus Extended Fast Scan

In the Basic Fast Scan, we evaluate and optimize the flows within the current supply chain network, without altering your asset footprint. If the question at hand concerns asset (e.g. factory or warehouse) positioning, we can show a ‘proof of value’ by conducting the Extended Fast Scan. Next to the analysis in the Basic Fast Scan, we evaluate and optimize an alternative asset location and compare the two network configurations based on cost metrics. Both Fast Scan version are offered against fixed fees.

## Why connect to EyeOn?

EyeOn provides a wide range of solutions to support tactical and strategic supply chain decision-making to improve long-term business performance, making us a one-stop shop.

Uniquely combining data science expertise with business knowledge, we strike the right balance between data-driven modelling and business assumptions.

## How can we help you?

Let us assist you in taking your first steps in future-proofing your supply chain. Make use of our expertise to have your strategic decisions driven by data rather than by “gut feeling”.

## Interested?

Visit our [website](#) or contact us at [mail@eyeon.nl](mailto:mail@eyeon.nl) for more information or to make an appointment.

## How we quantify your network improvement potential

### 1. Collect

- Kick-off with an intake session
- Collect data in standard template

### 2. Validate

- Perform basic data preprocessing
- Validate data with customer (one round)
- Agree on business assumptions

### 3. Optimize & Visualize

- Optimize flows within current network
- Optional move one asset around
- Prepare reporting in PowerBI

### 4. Interpret

- Identify improvement areas
- Identify relevant drivers
- Summarize findings & conclusions

### 5. Share & Move forward

- Present findings & conclusions
- Agree on next steps & priorities

## Our promise

We apply proven innovations on forecasting and planning. We approach our clients’ challenges in the most pragmatic way possible. Using our extensive knowledge, we deliver valuable results and turn challenges into opportunities. This is how we develop and implement fit-for-purpose improvements with sustainable impact.